

Building Scalable IoT Platforms &
Smart Connected Devices

Smart IoT Gateway

Connect . Collect . Compute . Communicate

At HashStudioz Technologies, we specialize in creating smart, secure & connected industrial solutions for the future. Our Industrial IoT solutions & services are designed to transform the way industries operate, ensuring a more efficient & connected world. Join us in shaping the future of technology!

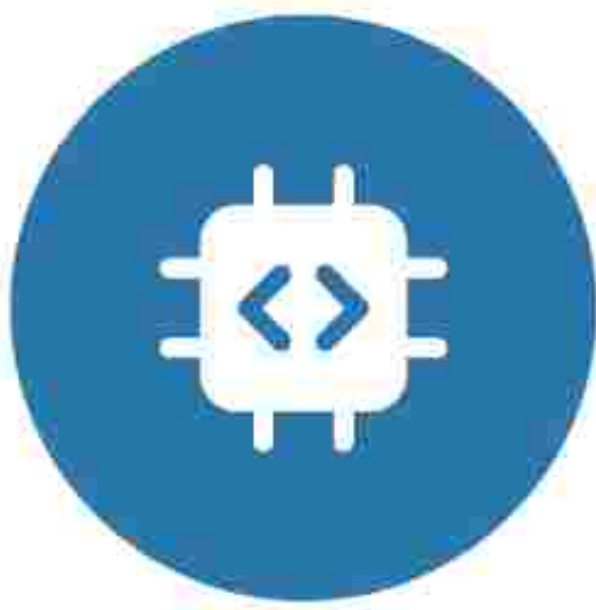


Transformative Solutions To Serve Business At Every Growth Phase

Introduction

The smart gateway drives the seamless transmission of data captured from machines, sensors, and PLCs through various available interface options to the cloud dashboard. Data communication and/or control operations can be performed using the desired communication protocol and the desired network interface.

Complete Solution for Remote Data Transmission & Control



Communicate over multiple standards with hardware



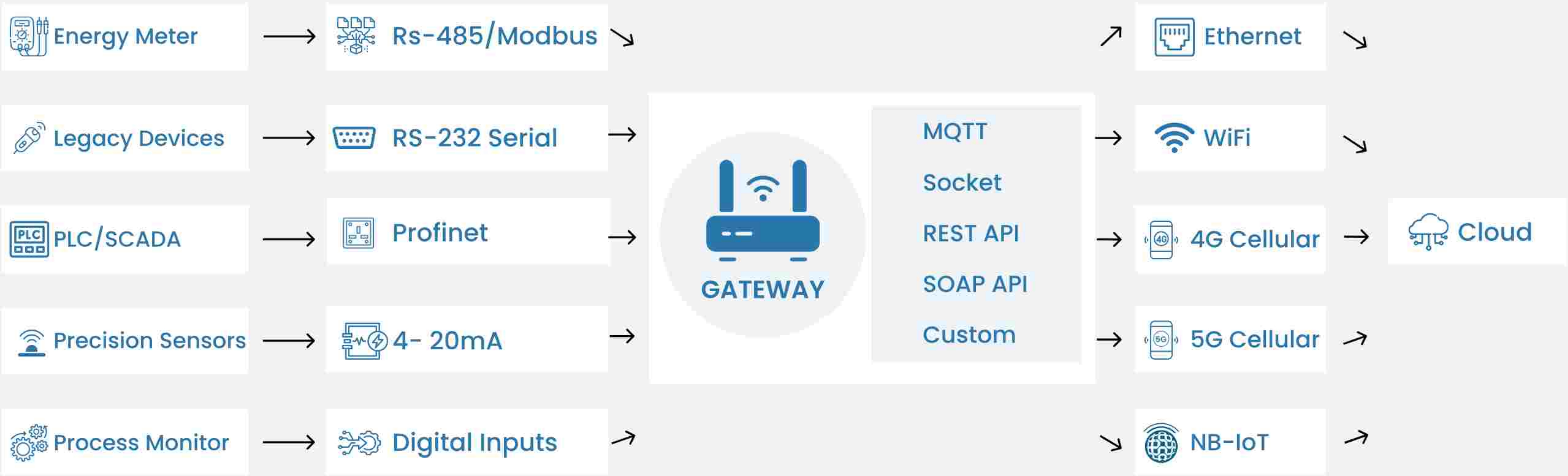
Multi protocol support for greater compatibility



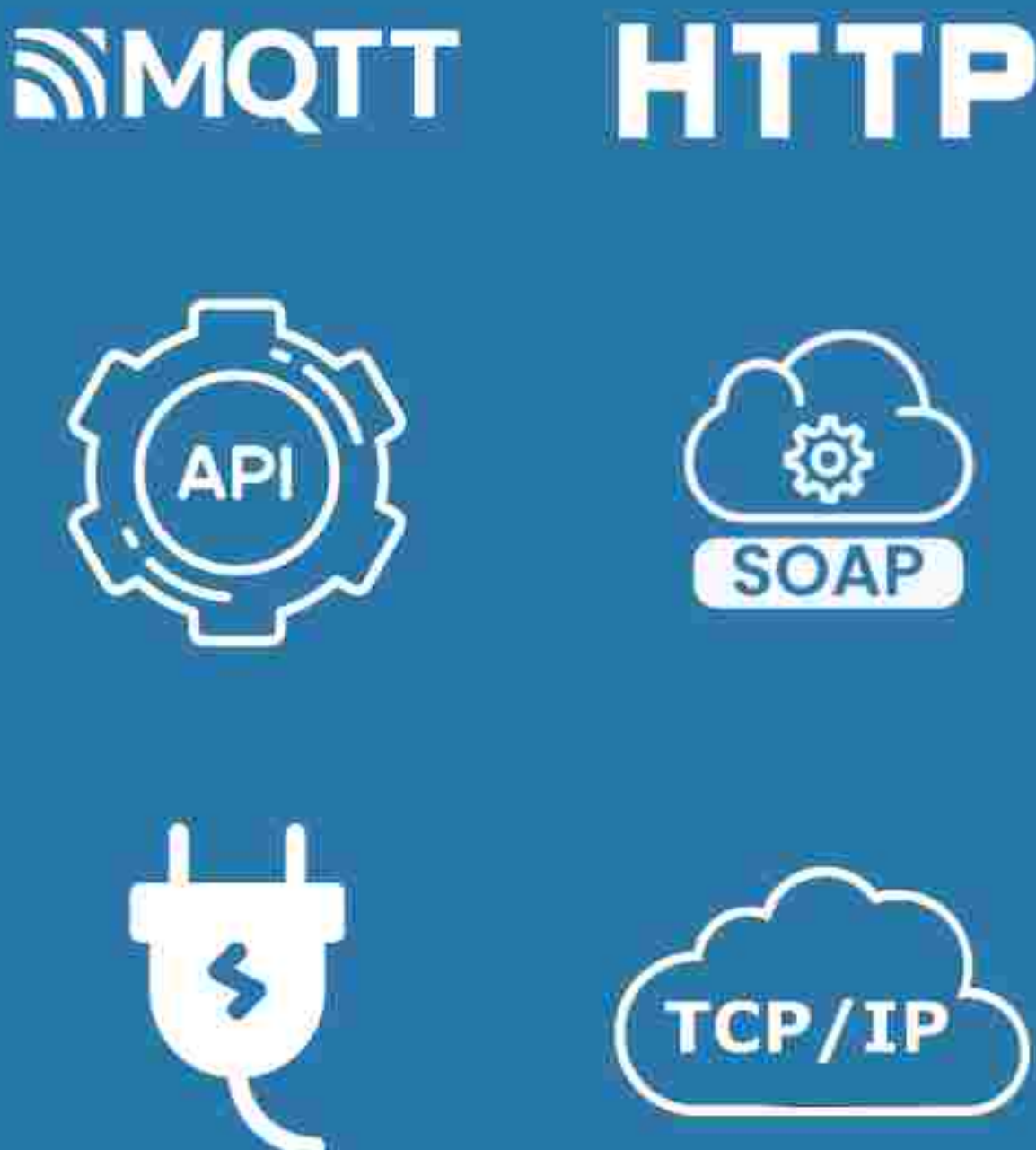
Remote configurable system



Supports bidirectional data & control operation



- 4-20 mA current loop input.
- Potential free digital input.
- 0-32v Digital Input.
- RS-485 Modbus.
- RS-485 Serial.
- RS-232 Serial profinet.

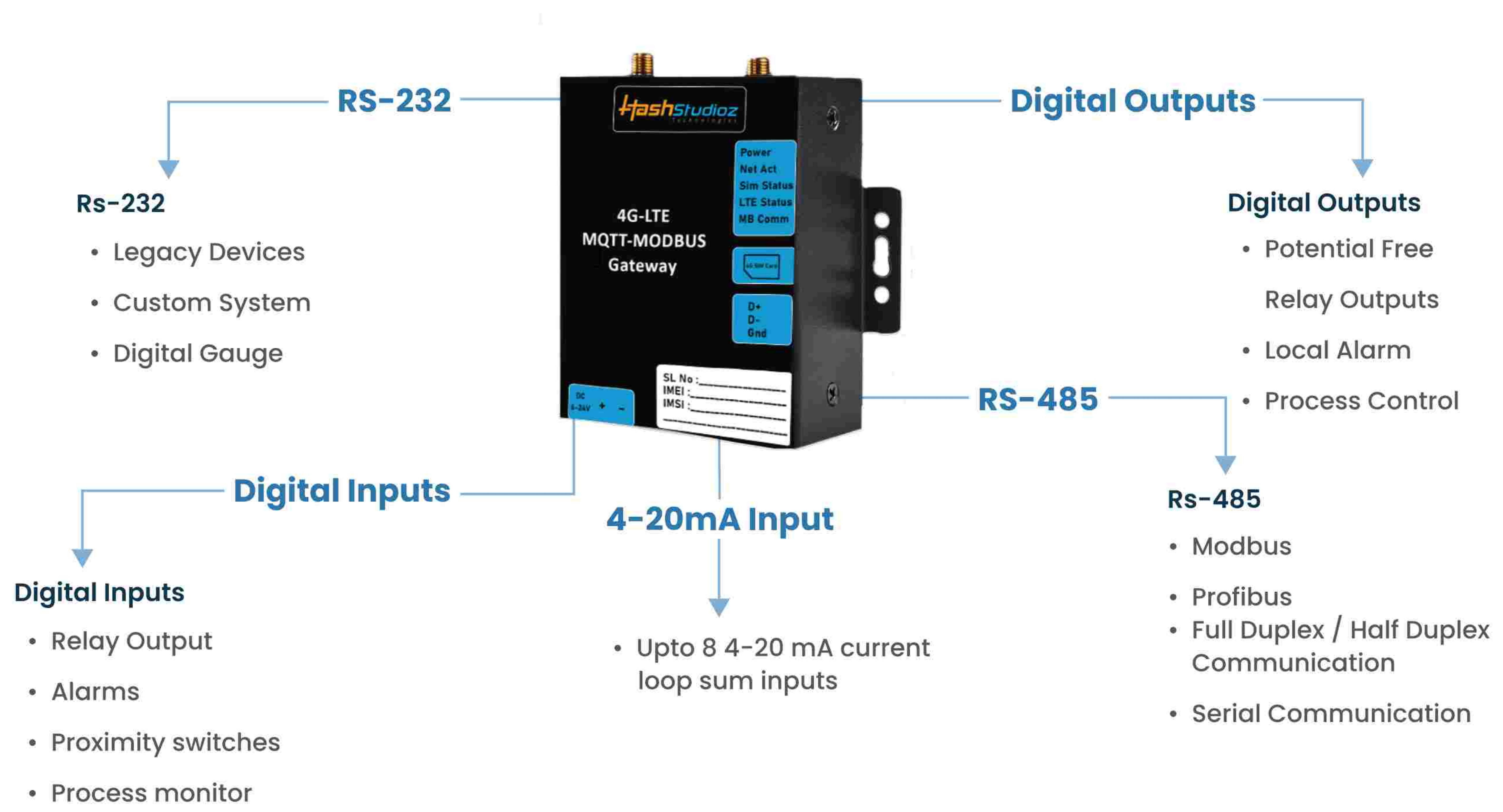


- Easily configurable remotely.
- Monitor or control device on any cloud dashboard.
- Supports all industrial band rates.
- Easy integration into existing SCADA system.

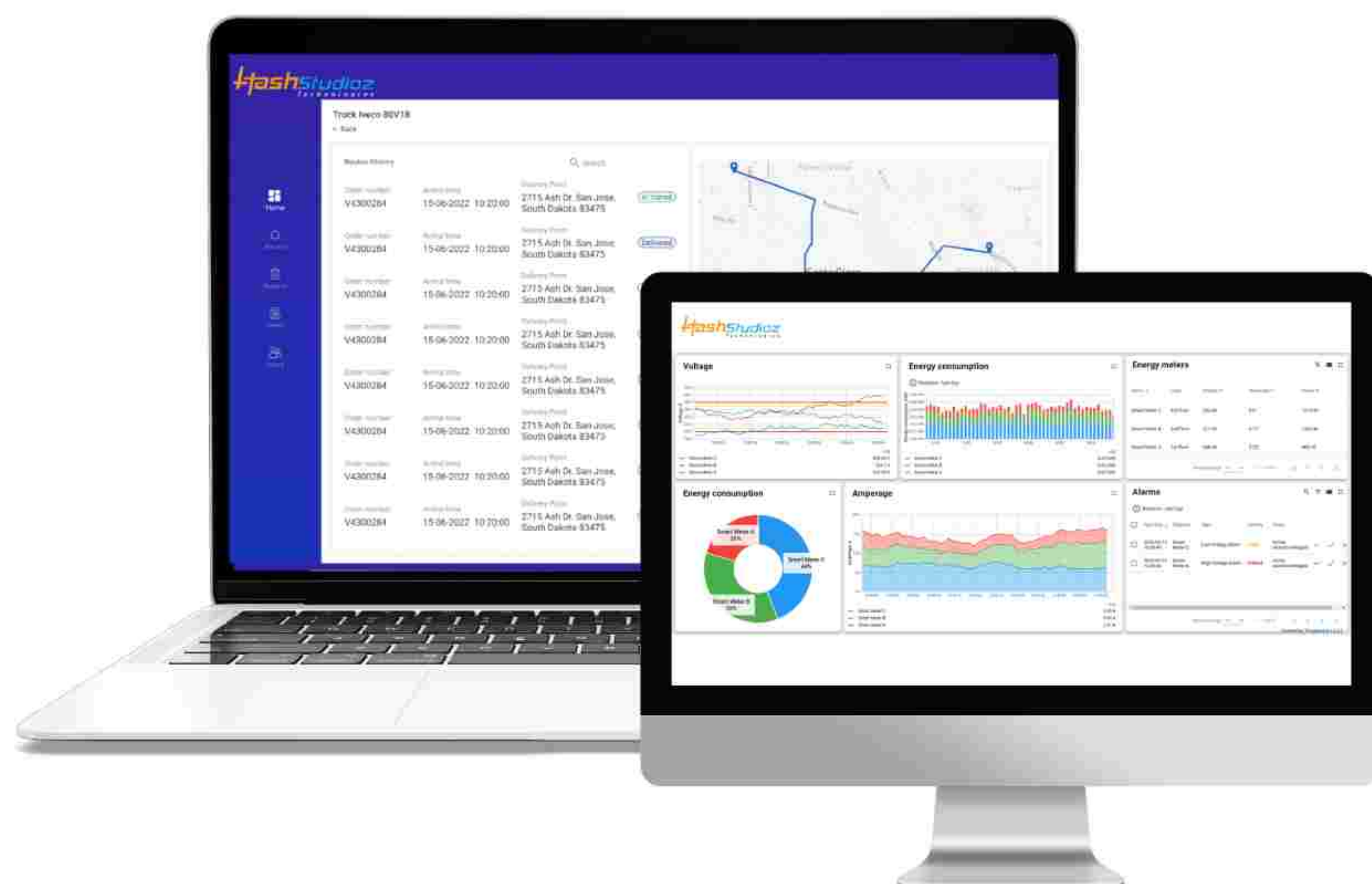
Technical Specification of IoT Gateway

Industrial IoT Gateway

Slave Devices		Data Acquisition & Storage	
Slave Device Connectivity:	RS 485	Acquisition Speed:	125ms (8Hz)
Max Slave Devices:	30	Local Data Storage:	500 Data Points
Slave Devices Supported:	RS-485, RS-232, 5DI, 10DI	Time Keeping:	Real-time Clock, Internet Synced
Max Slave Device on RS-485:	30	Tags Supported:	250 Registers/Slave
Auxiliary Supply		Asset/Machine Connectivity	
Input Voltage:	6 to 30 VDC	Modbus - TCP/IP Protocol:	1
Current Consumption:	1.5 Amp	Protocols for PLC Communication:	1
Power Supply Connection:	Terminal Block, DC JACK	Modbus RS-485 (Upto 12 Device):	1
Case & Dimensions		Operating Environment	
Dimensions (L X B X H):	115.5 X 78 X 27.5mm	Operating Temperature:	-10 to +50°C
Weight:	250 Gm	Relative Humidity:	5 to 95% Non Condensing
Enclosure:	Stainless Steel	Communication	
Mounting:	DIN Rail		
IP Rating:	33		
		Cloud Connectivity:	4G-LTE, WiFi, Ethernet



World's Smartest Industrial IoT Dashboard/Portal



Features

- Interactive, Customizable dashboards.
- Real time Data Monitoring.
- Actionable reports with graphs.
- Automated daily & monthly email reports.

We Offer



Hardware Design



Cloud & Mobile Solutions



Turnkey Manufacturing



Firmware Development

Our Clients/Partners

pine labs



COSMOS

